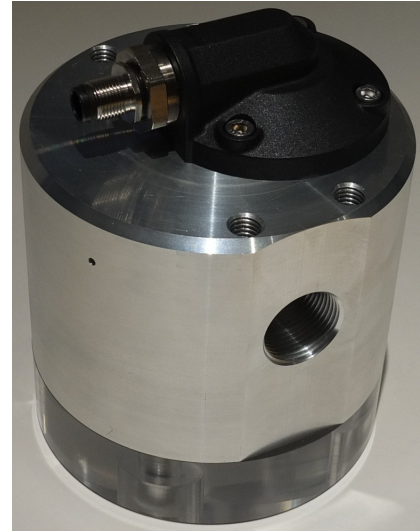


Visu-flo flowmeters are the latest development in the Trigear range of positive displacement flowmeters. They are used in critical flow applications where it is essential to identify flow is occurring locally whilst transmitting a signal to a PLC for remote monitoring. Based on the gear principle it offers outstanding features and benefits.

The Visu-flo totally out performs its competitors when it comes to the accurate metering of most clean liquids including fuels, oils, additives, chemicals, food bases, paints, viscous emulsions, insecticides, alcohols and solvents either pumped or gravity fed.



Benefits

- ✓ High accuracy and linearity standard ($\pm 0.25\%$)
- ✓ Wide turndown (less slippage, 54% more sealing characteristic)
- ✓ Smoother and quieter – less vibration (balanced gears)
- ✓ No requirement for flow conditioning
- ✓ Bi-directional flow capability

Features

- ✓ Very latest innovation for many decades
- ✓ High resolution quadrature pulse output available
- ✓ Dual outputs available
- ✓ Clear acrylic bottom gives visual indication of flow locally



VISU-FLO

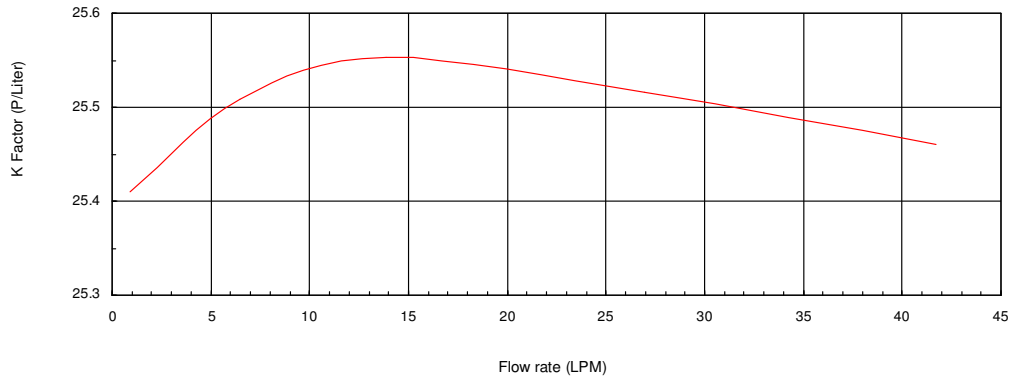
Performance and Specifications

Model prefix:	VF020
Capacity group:	medium capacity
Nominal size (inches)	20mm (3/4")
*Flow range – (LPM) litres/min	2 ~ 60
– (GPM) US gal/min	0.6 ~ 16
**Accuracy @ 3cp	± 0.25% of reading (25:1 turndown)
Repeatability	typically ± 0.01% of reading
Temperature range	-20°C ~ +80°C (-4°F ~ +180°F), refer factory for lower & higher temperatures
Maximum pressure (threaded meters)	bar (PSI)
Aluminium meters, Acrylic base	20 (300)
316 stainless meter, Acrylic base	20 (300)
316 stainless meters, Stainless Steel base	30 (440)
High pressure models	refer factory
Electrical – for pulse meters (see below for optional outputs)	
Output pulse resolution	Pulses/litre (pulses/US gallon) – nominal
Hall Effect	25 (95)
Hall Effect output (PNP)	3 wire open collector, dual voltage 5 ~ 50Vdc max., 20mA max.
Optional outputs	4 ~ 20mA, scaled pulse, flow alarms or two stage batch control
Physical	
Protection class	IP66/67 (NEMA4X), integral ancillaries can be supplied I.S. (intrinsically safe)
Noise generation @ maximum flow	-
Dimensions	refer data sheet
Pressure drop chart	refer data sheet
Min. filtration – microns (mesh)	150 microns (100 mesh)

* Maximum flow is to be reduced as viscosity increases, see flow de-rating guide. Max. allowable pressure drop is 140Kpa (20psi).

Viscosities (cp)	Max. flow multiplier
up to 1200	1.0
1200 ~ 4000	0.6
up to 6000	0.5
up to 10000	0.4
up to 20000	0.3
40000 max.	0.16
60000 max.	0.12
100000 max.	0.08
200000 max.	0.06
400000 max.	0.05
600000 max.	0.04
up to 1000000	0.03

TYPICAL CALIBRATION RESULTS

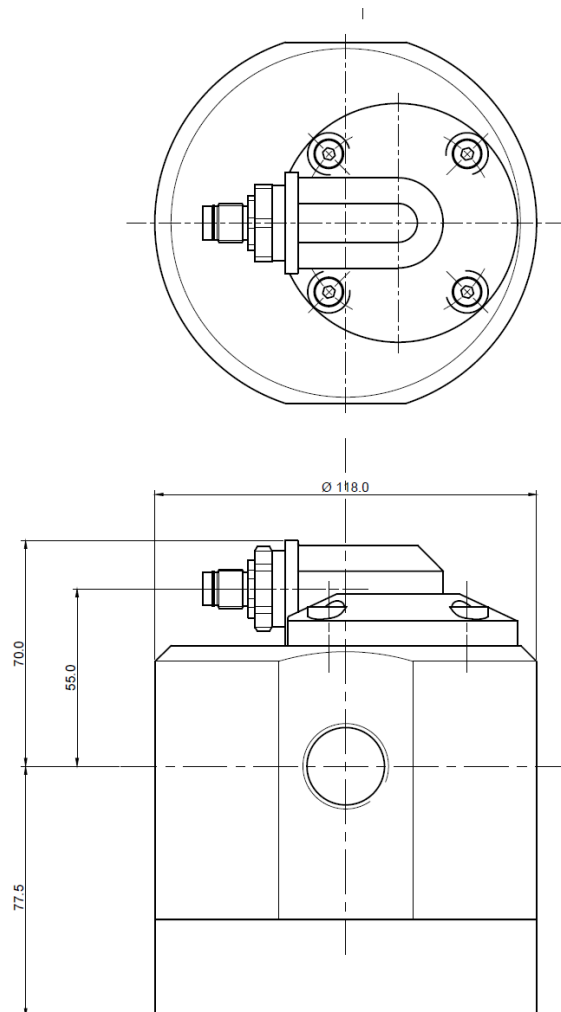


Model Designation

Size	
VF 020	3/4" (20mm) aluminium or stainless steel
Body material	
A	Aluminium (Acrylic base)
S	316L Stainless Steel (Acrylic base)
N	316L Stainless Steel (Stainless Steel base)
Gear material	
1	PPS (Ryton)
Bearing type	
1	PPS (Ryton)
O-ring material	
1	Viton (standard)
2	EPR - (Ethylene Propylene Rubber)
3	Teflon encapsulated viton
4	Buna-N (Nitrile) 100 °C (212 °F) max.
Temperature limits	
1	80°C (180°F)
Process connections	
1	BSP female threaded
Cable entries	
1	M20 x 1.5mm
2	1/2" NPT
3	M 12 4DIN plug
Integral options	
High resolution Hall Effect output	HR High Resolution
3 wire pulsating flow Hall Effect option	PF Pulsating Flow
4 ~20mA output option	420 Analogue output

Model No. Example

VF 020 A 1 1 1 - 1 1 1 HR



DSVF - 1706

Trigear Manufacturing
Unit 2, The Old Grain Store,
Ditchling Common Industrial Estate,
Ditchling, East Sussex
BN6 8SG
United Kingdom
Tel: 01444 248777
Fax: 01444 243750
Email: sales@trigearflowmeters.com

Distributed by: